

# Naitre et Devenir

## ... Overview

- **Information and dialogue** with parents
- **Systematic screening** for medical and sensory impairment
- **Early identification** of learning disabilities in schools
- **Through your participation in this network**, we will be able to collect anonymous epidemiological data on the destiny of the monitored children, which will contribute to progress in the care for children born preterm

## ... Key figures

- About **15 integration of infants** per month
- Twins (or more) account for **one third** of children in the network
- End of follow-up at **7-years-old**




**Are you looking for information, a primary professional, or do you have questions?**

**The network coordination unit is at your disposal:**

 **04 76 76 95 31**

 [ReseauNaitreDevenir@chu-grenoble.fr](mailto:ReseauNaitreDevenir@chu-grenoble.fr)  
[www.rpai-perinat.org/naitre-devenir](http://www.rpai-perinat.org/naitre-devenir)

 Grenoble Alpes University Hospital  
CS 10217 - 38043 - Grenoble Cedex 9



[www.naitre-et-devenir.fr](http://www.naitre-et-devenir.fr)

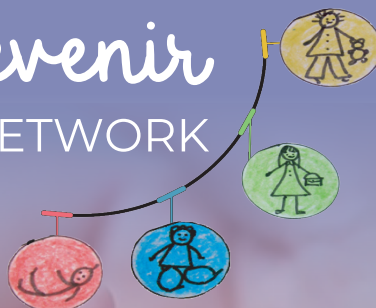
## Partners:

- FPG, RPAI, FFRSP
- GCS Maison Ressource Santé (health networks centre) en Isère: Coordination and Referral Platform, Anaïs Network, REPPPO
- Isère Departmental Council - Maternal and Infant Health services
- The associations Voie lactée, SOS préma, Jumeaux et Plus
- Other networks monitoring preterm infants in the AURA region and in France (monitoring the case in the event of a move, but also joint coordination of medical monitoring, IT platforms, continuous training, etc.)



# Naître et Devenir

CITY-HOSPITAL NETWORK



## MONITORING VULNERABLE CHILDREN

From the time  
they leave the  
neonatal unit  
until they are  
7 years old!

BORN PRETERM OR  
WITH BIRTH DEFECTS

 **ELSAN**  
Notre Santé autrement



Sur les sites :  
Hôpital Couple Enfant  
Hôpital de Voiron



# About us

The Alpes-Isère Perinatal Network has established a city-hospital network to provide medical follow-up for preterm and vulnerable newborns, from the time they leave the neonatal unit until the age of 7: Naître et Devenir

## CITY/HOSPITAL NETWORK:

Paediatricians in the neonatology departments and the Kangourou Unit (Grenoble University Hospital, Belledonne Clinic, Voiron Hospital) collaborate with city practitioners **to provide follow-up care for infants who were born preterm, infants that have presented difficulties at birth, or who are affected by a complex congenital heart disease.** Practitioners join the network if they want to take part in the follow-up process. All the participating doctors receive special training and work in pairs to monitor the children's health and development.


## THE ROLE OF THE NETWORK:

Our goal is to offer **follow-up care** that is **tailored** to your child's development, to propose screening at "key" ages and, if necessary, to orient check-up and treatment.

## WHY BECOME A MEMBER?

Joining the Naître et Devenir network makes it possible to **receive consistent care** from professionals who are committed to you and your child, from the moment you leave the neonatal unit. They will be able to reassure you and refer you to appropriate care, if necessary (e.g. physiotherapy, speech therapy, etc.).

The network is presented to you during your child's hospitalisation: you may consent to this follow-up care by signing the membership form.



De la sortie de  
néonatalogie  
jusqu'à 7 ans



Joining the  
network is  
**FREE  
OF CHARGE**

## Admission criteria:

**Groupe A:** all children born  $\leq 32$  weeks' gestation\* + 6 days

**Groupe B:** All full-term children having presented difficulties at birth:

- hospitalised at birth for anoxic-ischemic encephalopathy
- born with complex congenital heart disease
- birth weight less than 1500 grams

The **Naître et Devenir** network takes care of children born at the Grenoble University Hospital, the Belledonne Clinic and the Voiron University Hospital or born in other maternity hospitals but living in Isère.





## Organisation of follow-up:

Only designated doctors will have access to your child's digital file on a secure health platform: GCS Sara

### The schedule for follow-up visits: dual expertise

- A lead private practitioner: paediatrician, infant health care doctor (PMI) or general practitioner chosen by the parents from the list of doctors who are part of the network
- A lead hospital-based paediatrician

### Consultations are also scheduled with:

**A psychologist:** at your child's 6th month (free review about adapting to home-coming after hospitalisation, baby's rhythm, etc.) and at the child's 2nd birthday (developmental screening)

**A neuropsychologist:** upon referral by the medical team monitoring the child

### The psychologists and the neuropsychologist assess the different stages of the child's development:

- Global motor skills: sitting, walking, etc.
- Fine motor skills: manipulating objects, games, drawing, etc.
- Language, communication, interaction



## Some tips:

- Anticipate making appointments with private or hospital practitioners
- Inform the practitioner when booking the appointment that it is for a Naître et Devenir consultation
- Communicate scheduled appointments to the coordinating team by email or telephone
- From the age of 4 onwards, please bring the teachers' questionnaire which will be sent to you with each annual reminder in order to complete the medical assessment

“

The coordination unit of the Naître et Devenir network is open to input from parents and the various healthcare professionals in order to organise the extended follow-up as efficiently as possible!

”

